

SECTION

1. SEE GENERAL NOTES ON SHEET 1.

- ① CONCRETE SURFACE REPAIR AT UNDERSIDE OF DECK AND OTHER LOCATIONS AS NOTED. AREAS THAT REQUIRE REPAIR ARE SHOWN BY THE HATCHED AREAS. MATCH EXISTING FORMED SURFACES.
- ② APPLY FIBER WRAP REINFORCING NON-STRUCTURAL AROUND COMPLETE CIRCUMFERENCE OF PIER IN AREAS OF CRACKING.
- ③ REPLACE STEEL RAILING BOTTOM RAIL WHERE RUSTED COMPLETELY THROUGH.

BID ITEM NO.	BID ITEM	QUANTITY	UNIT
90001	CONCRETE SURFACE REPAIR	195	S.F.
90004	FIBER WRAP REINFORCING NON-STRUCTURAL	80	S.F.
90007	BOTTOM RAIL REPLACEMENT	8	L.F.

[illegible]

PARK STREET PEDESTRIAN BRIDGE (P-13-760)

BRIDGE REPAIRS - 2025

CITY PROJECT NO. 15234
CONTRACT NO. 8811

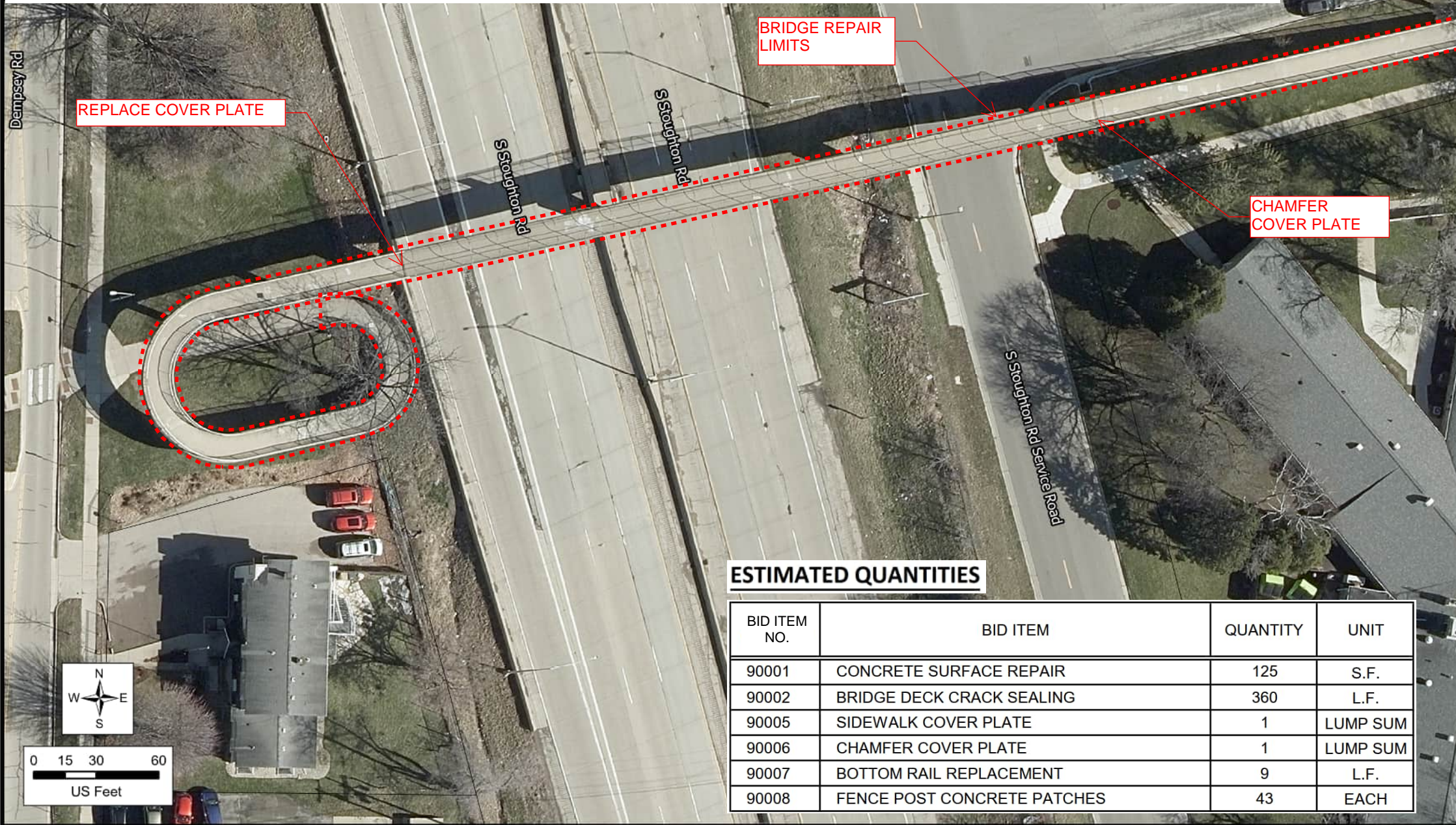
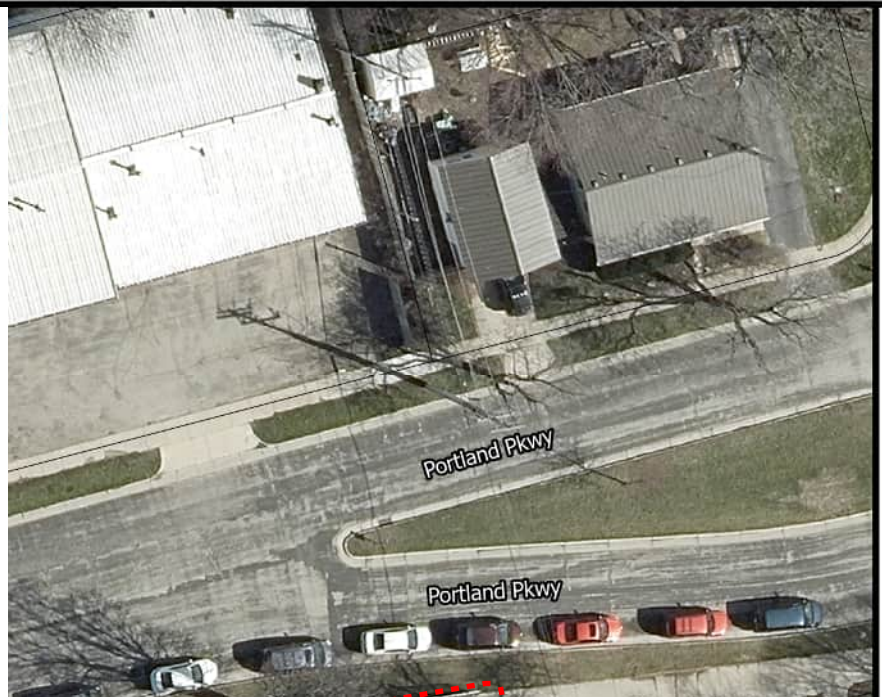
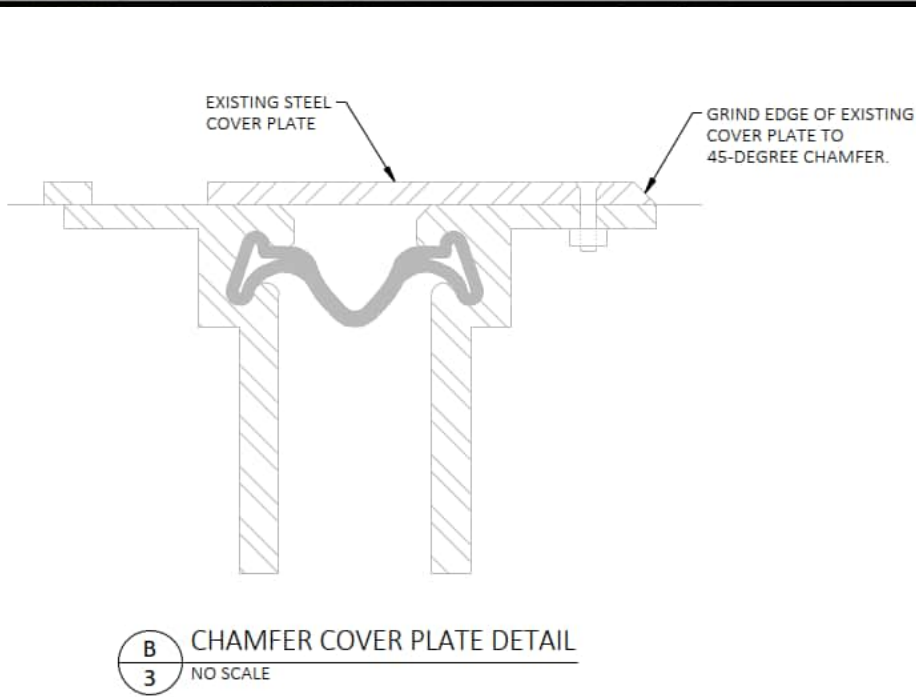
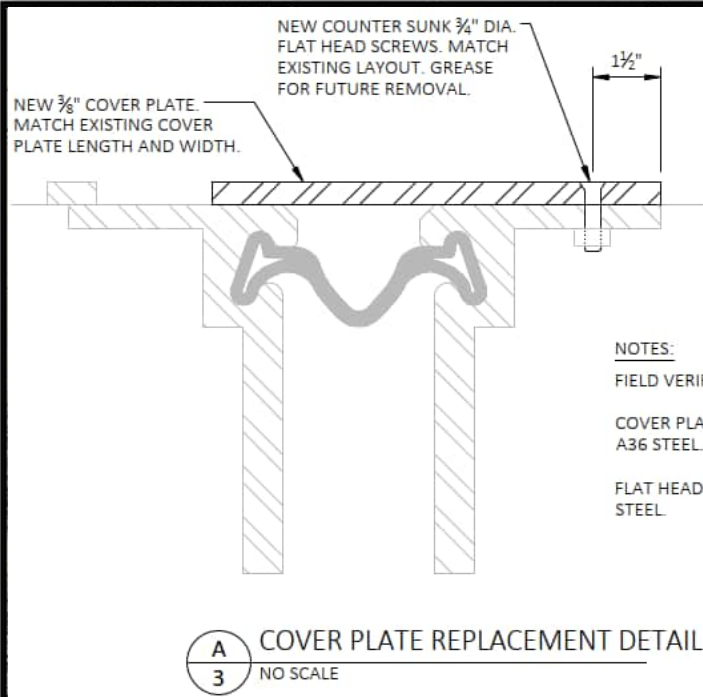
MADISON, WISCONSIN

JOB NO.
1020.134

PROJECT MGR.
KRB



P-1



ESTIMATED QUANTITIES

BID ITEM NO.	BID ITEM	QUANTITY	UNIT
90001	CONCRETE SURFACE REPAIR	125	S.F.
90002	BRIDGE DECK CRACK SEALING	360	L.F.
90005	SIDEWALK COVER PLATE	1	LUMP SUM
90006	CHAMFER COVER PLATE	1	LUMP SUM
90007	BOTTOM RAIL REPLACEMENT	9	L.F.
90008	FENCE POST CONCRETE PATCHES	43	EACH

- GENERAL NOTES:**
- SEE GENERAL NOTES ON SHEET 1.
- GENERAL SCOPE OF WORK (SEE SPECIFICATIONS FOR FURTHER DETAIL):**
- CONCRETE SURFACE REPAIR AT SPALLS ALONG SIDES AND TOP OF BRIDGE DECK.
 - PATCH CONCRETE POP OUTS AT THE BASE OF FENCE POSTS.
 - EPOXY SEAL TRANSVERSE CONCRETE CRACKS ACROSS TOP OF DECK.
 - REPLACE BOTTOM RAIL OF RAILING WHERE RUSTED COMPLETELY THROUGH PER DETAIL **(A/2)**
 - REPLACE SIDEWALK COVER PLATE ON WEST END OF BRIDGE PER DETAIL **(A/3)**
 - CHAMFER COVER PLATE ON EAST END OF BRIDGE PER DETAIL **(B/3)**

USH 51 PEDESTRIAN BRIDGE (B-13-341)

BRIDGE REPAIRS - 2025

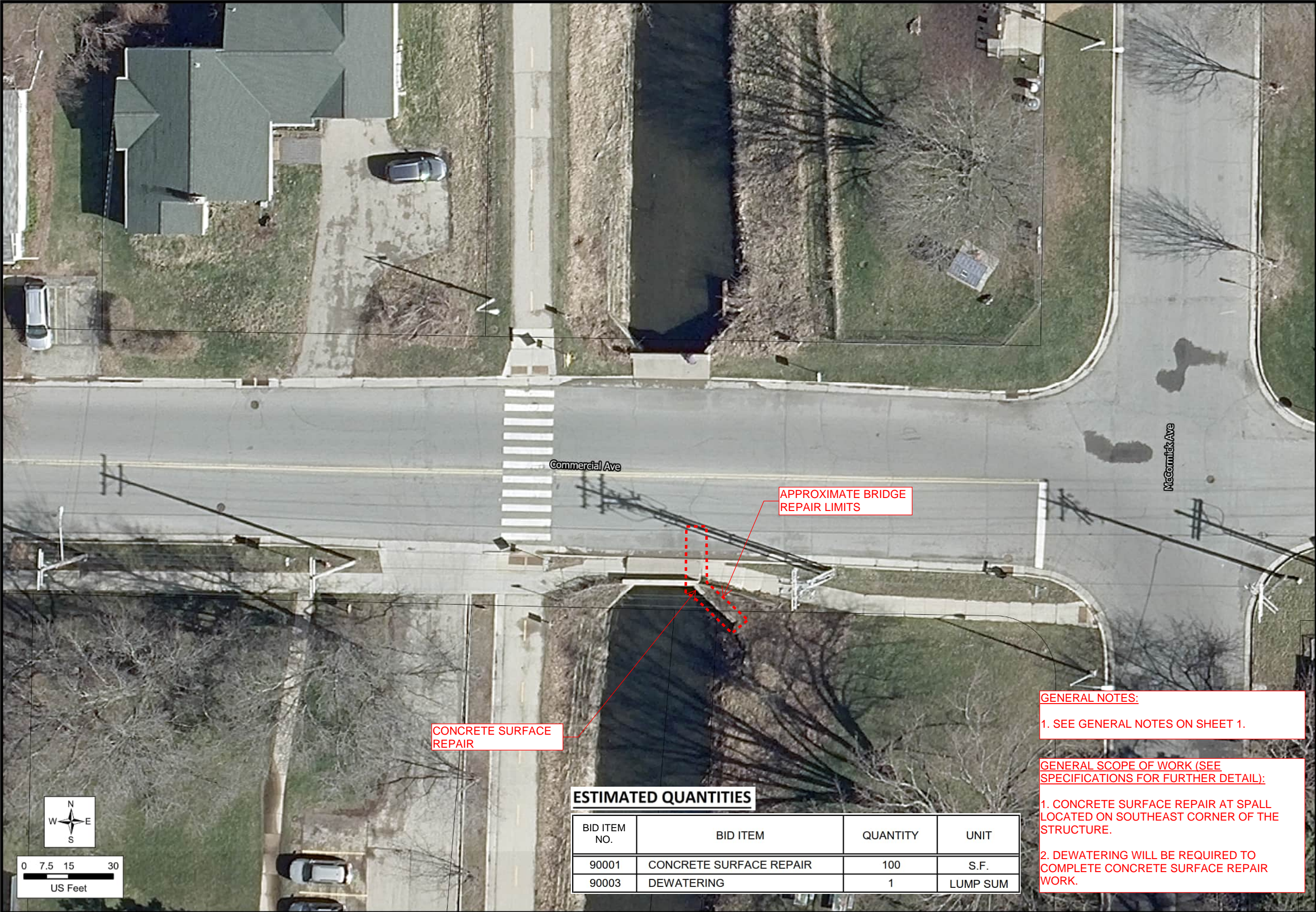
CITY PROJECT NO. 15234

CONTRACT NO. 8811

CITY OF MADISON

MADISON, WISCONSIN





CONCRETE SURFACE
REPAIR

APPROXIMATE BRIDGE
REPAIR LIMITS

ESTIMATED QUANTITIES

BID ITEM NO.	BID ITEM	QUANTITY	UNIT
90001	CONCRETE SURFACE REPAIR	100	S.F.
90003	DEWATERING	1	LUMP SUM

GENERAL NOTES:

1. SEE GENERAL NOTES ON SHEET 1.

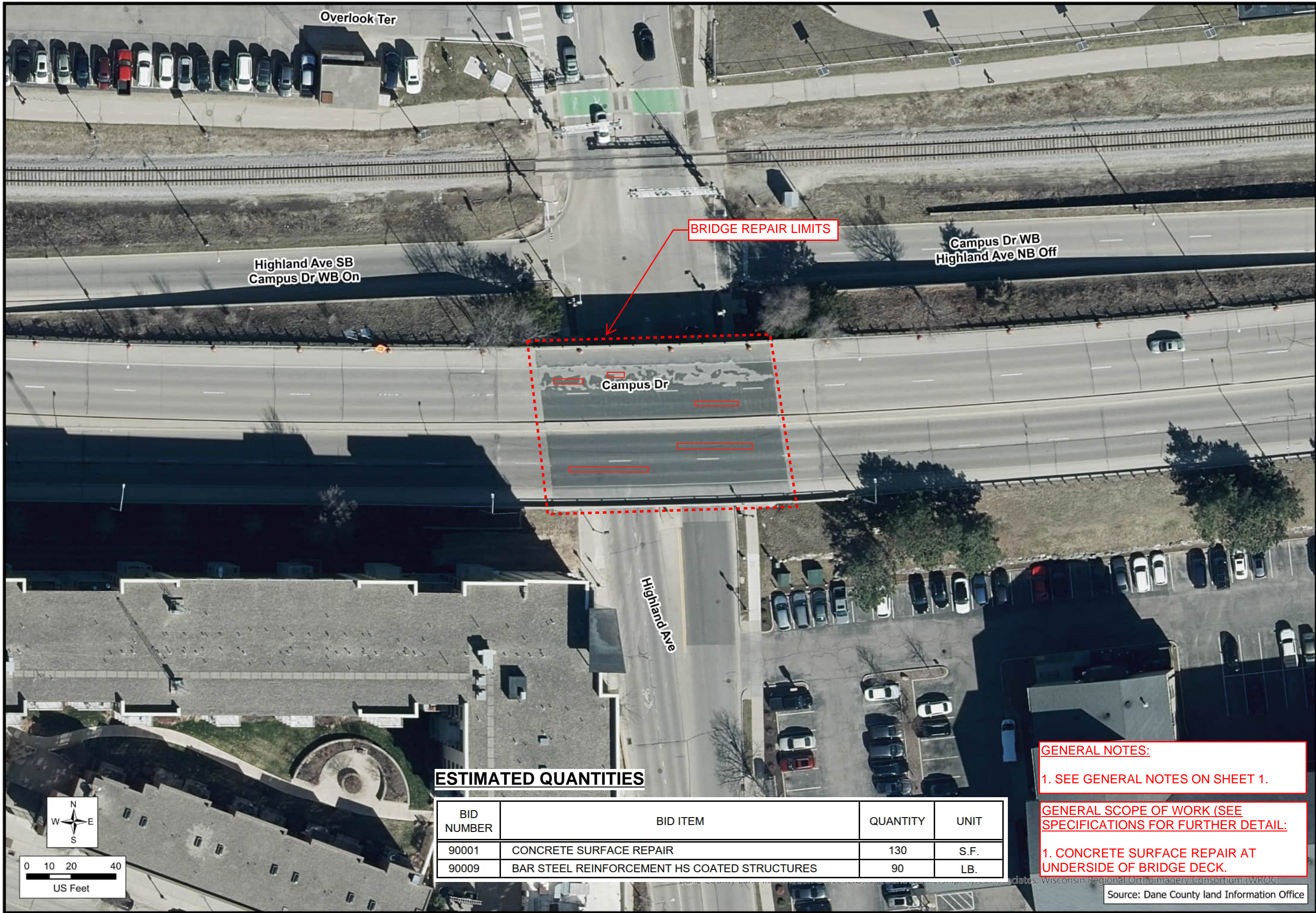
GENERAL SCOPE OF WORK (SEE SPECIFICATIONS FOR FURTHER DETAIL):

1. CONCRETE SURFACE REPAIR AT SPALL LOCATED ON SOUTHEAST CORNER OF THE STRUCTURE.
2. DEWATERING WILL BE REQUIRED TO COMPLETE CONCRETE SURFACE REPAIR WORK.

COMMERCIAL AVENUE BRIDGE OVER STARKWEATHER CREEK

BRIDGE REPAIRS - 2025
CITY PROJECT NO. 15234
CONTRACT NO. 8811
CITY OF MADISON
MADISON, WISCONSIN





ESTIMATED QUANTITIES

BID NUMBER	BID ITEM	QUANTITY	UNIT
90001	CONCRETE SURFACE REPAIR	130	S.F.
90009	BAR STEEL REINFORCEMENT HS COATED STRUCTURES	90	LB.

GENERAL NOTES:

1. SEE GENERAL NOTES ON SHEET 1.

GENERAL SCOPE OF WORK (SEE SPECIFICATIONS FOR FURTHER DETAIL:

1. CONCRETE SURFACE REPAIR AT UNDERSIDE OF BRIDGE DECK.

Source: Dane County land Information Office

CAMPUS DRIVE BRIDGE OVER HIGHLAND AVENUE (B-13-266)

BRIDGE REPAIRS - 2025

CITY PROJECT NO. 15234
CONTRACT NO. 8811
CITY OF MADISON
MADISON, WISCONSIN

